

NIHR Sheffield BRC and CRF Equality, Diversity and Inclusion Strategy



The NIHR Sheffield BRC and CRF are committed to promoting and embedding EDI throughout all aspects of our work

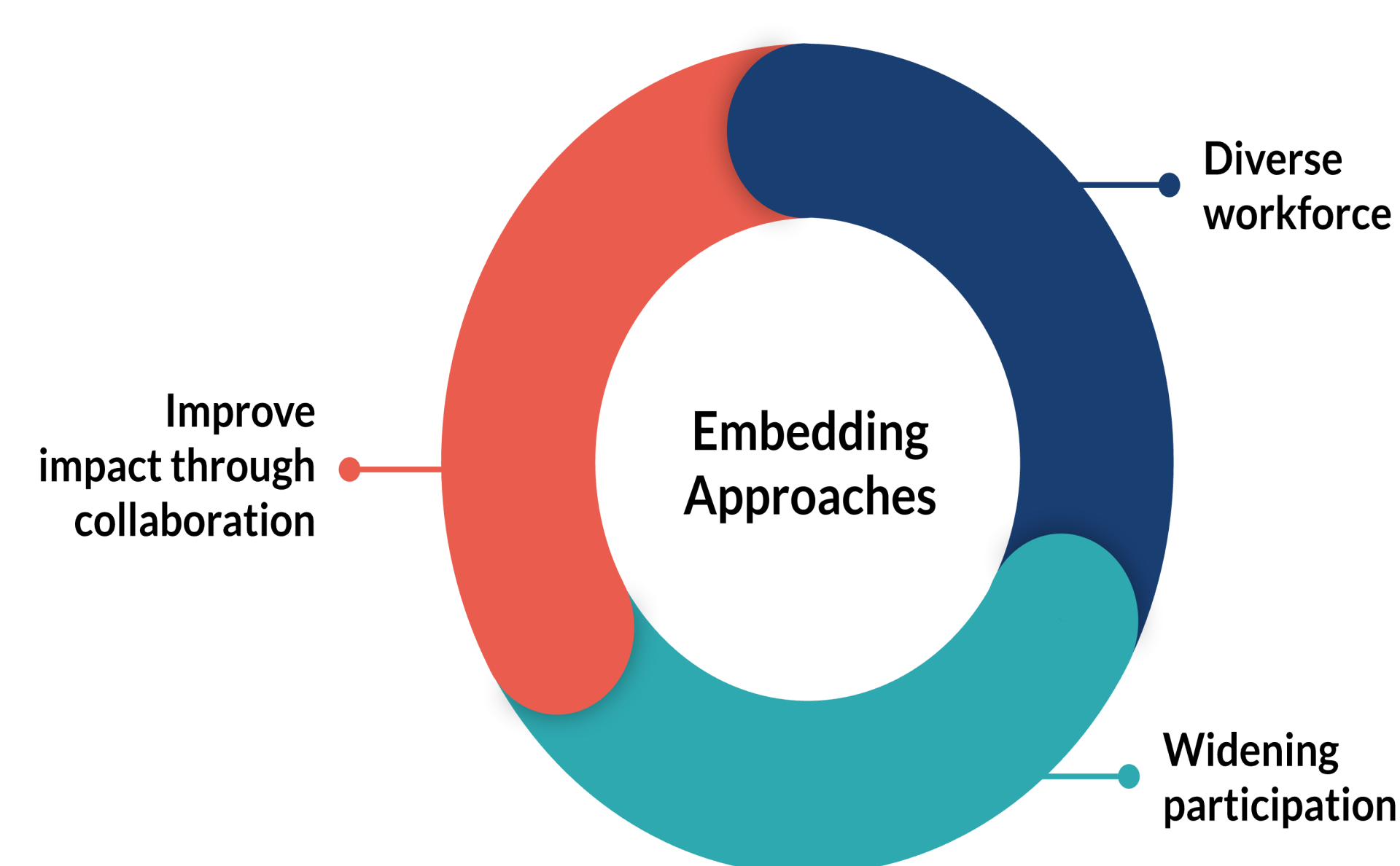
If you would like to collaborate, please contact: shoba.dawson@sheffield.ac.uk

Context

The NIHR Sheffield BRC develops academic science emerging from the University of Sheffield into clinical research under four themes: Neuroscience, Infection and Immunity, Cardiovascular Disease and Imaging and Engineering. The NIHR Sheffield CRF provides purpose built, dedicated research facilities within Sheffield Teaching Hospitals for conducting high quality clinical research.

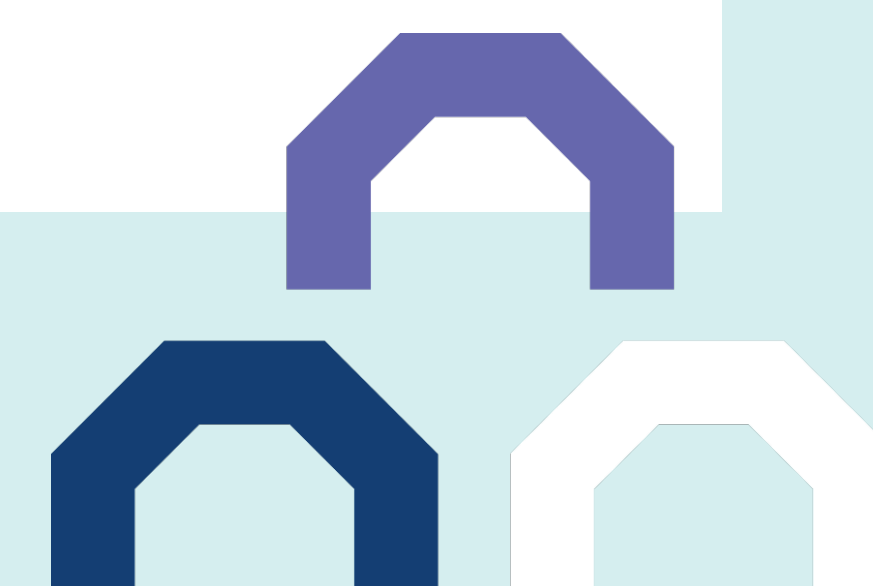
Strategy aims

- Promoting inclusive research environment facilitating wider participation from diverse groups.
- Attract, develop and retain high quality staff to improve research capacity and create a more diverse and vibrant workforce.
- Deliver an impactful and expanded network of effective research collaborations to benefit our local communities and regions.
- Commitment to continued reflections and improvements as we seek to embed EDI across everything we do.



What next?

- Improved community understanding of research and involving them at all stages of the research pathway.
- Recruitment to studies focusing on increasing the participation of underrepresented groups in experimental medicine.
- Continue to systematically collect, analyse and review staff diversity data. Establish EDI champions for oversight of EDI within themes.
- Creating a network of contacts with Primary Care Sheffield, other primary care organisations, community groups and disease charities to facilitate future EDI initiatives.
- Optimise clinical trials design to ensure low-burden, inclusivity and efficiency.
- Collaboratively develop specific research objectives and related research with patient and community groups.
- Develop evidence for more inclusive and community-oriented methods to ensure research is tailored to reach more diverse, and less-engaged, communities.
- Showcase best practice and positive impact examples through online media public engagement and Sheffield led events.
- Support training and development.



Scan the QR code to read the full joint Sheffield EDI strategy in full

NIHR | Sheffield Biomedical Research Centre
@SheffieldBRC

NIHR | Sheffield Clinical Research Facility
@CRFSheffield