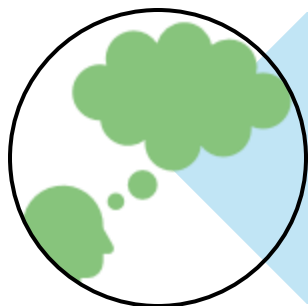


## Baseline data has a bigger story: what we can learn from study and system level barriers in data collection



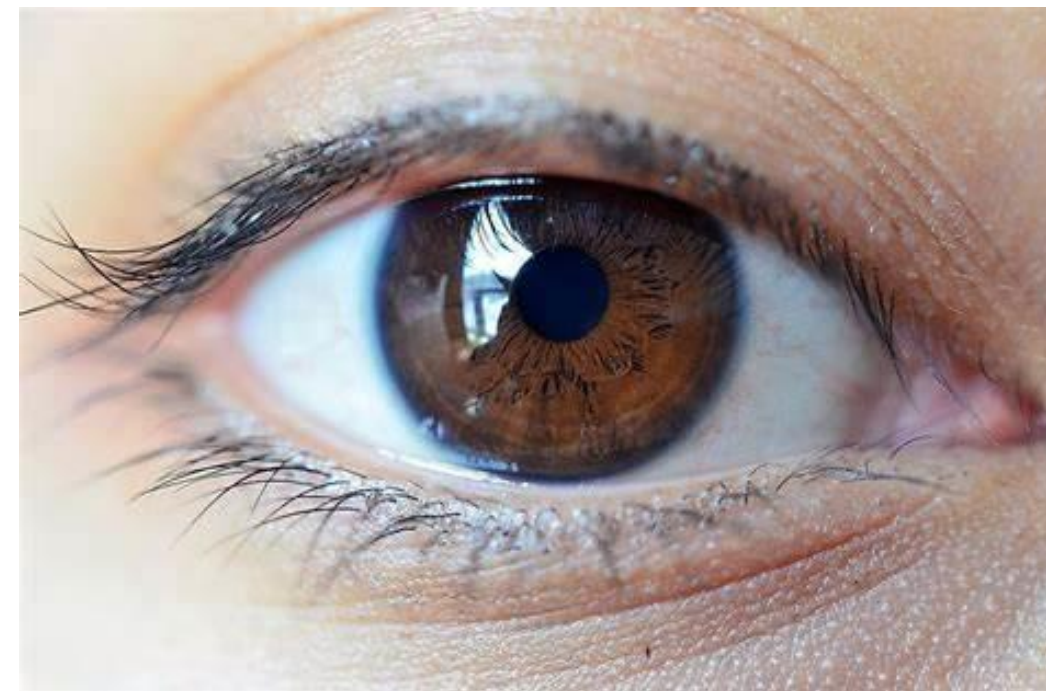
The process of establishing baseline data for our research participants – what is fact and what is fiction?



5 year review showed that we know very little about who has been in our research



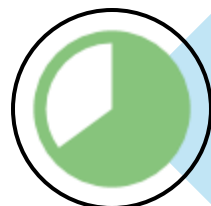
Did not show us 'who' was missing- but more 'what' was missing



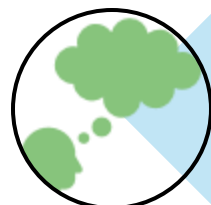
Chrissie Adams she/her

Equality, Diversity and Inclusion Research Associate  
NIHR Moorfields BRC and CRF

## Baseline data has a bigger story: what we can learn from study and system level barriers in data collection



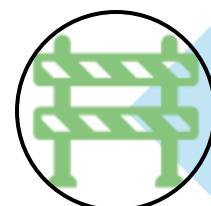
41% of our participants had a 'NOT STATED' code



57% of our research participants had an unknown ethnic background

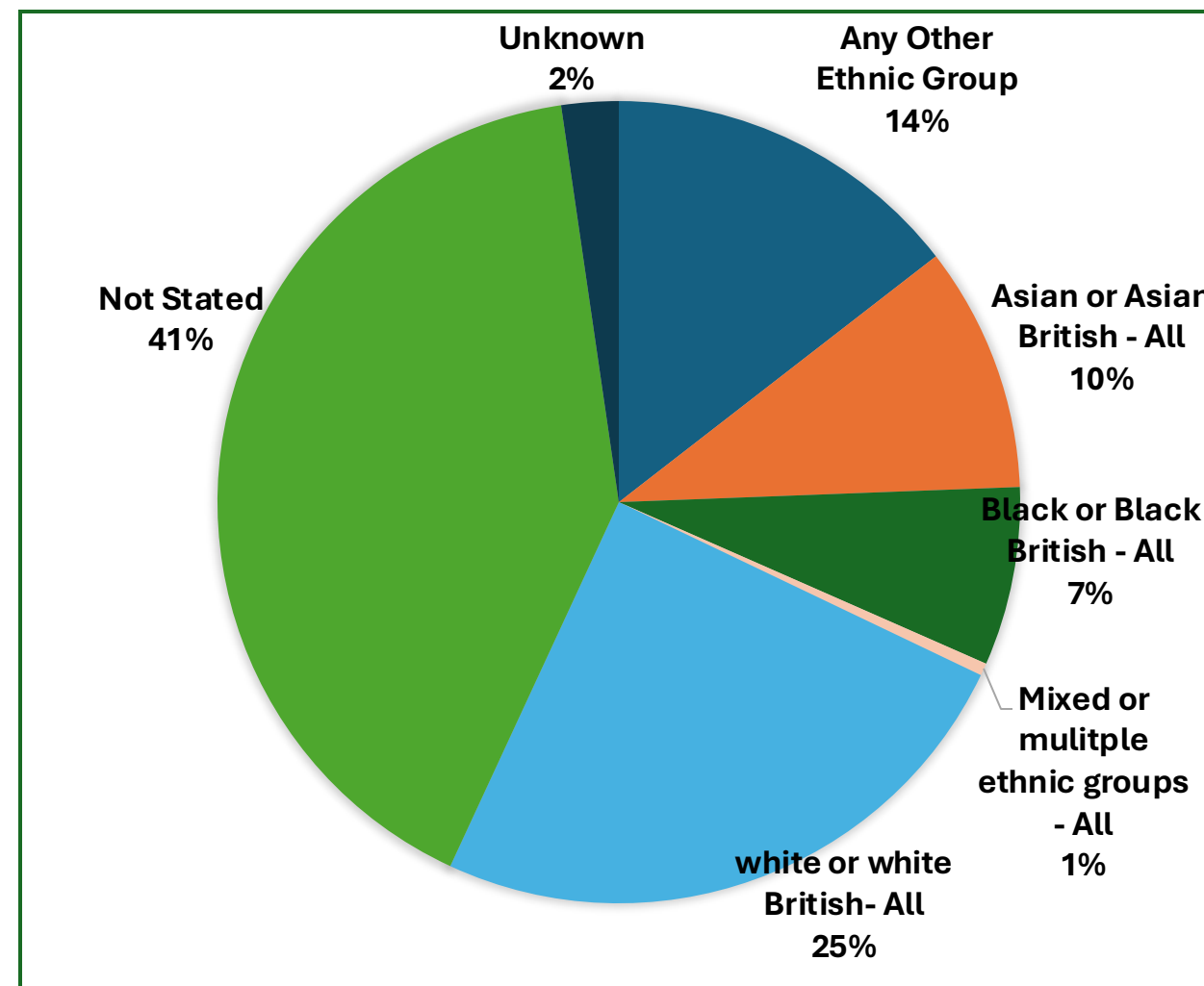


This had increased by 14% from 2022 – with an impact post covid due to switching from calling to qualify patient details, to in-person



Baseline Data Collection = significant barriers in data collection at

<b>System Level</b>	<b>Study Level</b>
<b>Patient Level</b>	



## System Level Barrier

- PAS data quality issue- Trust level
- Research Level -We are not recording things centrally.
- We have multiple ways of retaining ethnicity data, and multiple data bases
- We have varied terms/language/forms and no centralised mandated recording

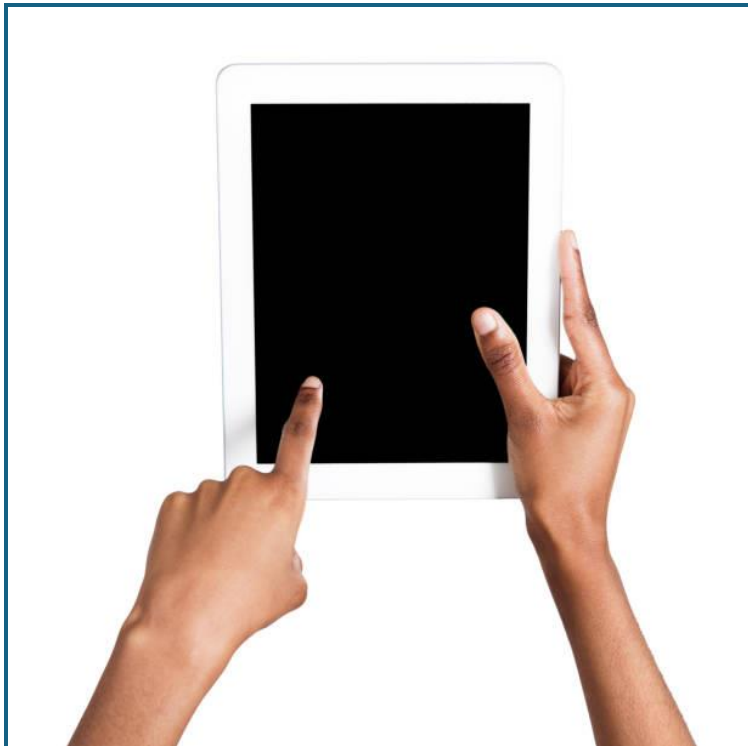
## Study Level Barrier

- We are not mandating that this be collected.
- It is not compulsory
- Commercial studies vary
- We are not prioritising this
- Time is not being allocated to data input post study
- Time is not being allocated to reviewing PIS, CRF, Consent forms through an Inclusion Lens

Take back control at a local level. Inclusion work should be about creating new ways of doing things. Don't expect the existing systems to 'fit' people within them – that's not equity.



Changed EDGE profile options  
Ran Education Sessions  
Accountability



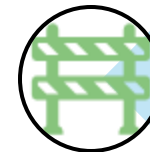
Equality Questionnaire for iPad



Self Service option and private space



Accessibility for sight loss



No Patient Level Barrier  
(unless you want to know someone's income)